



Day and Night The Ideal Hunting Partner

DU Ursa Minor Series Digital

Day & Night Vision Riflescope



1

Product Overview

2

Product Features

3

Component illustration

4

Product Application

DU Series



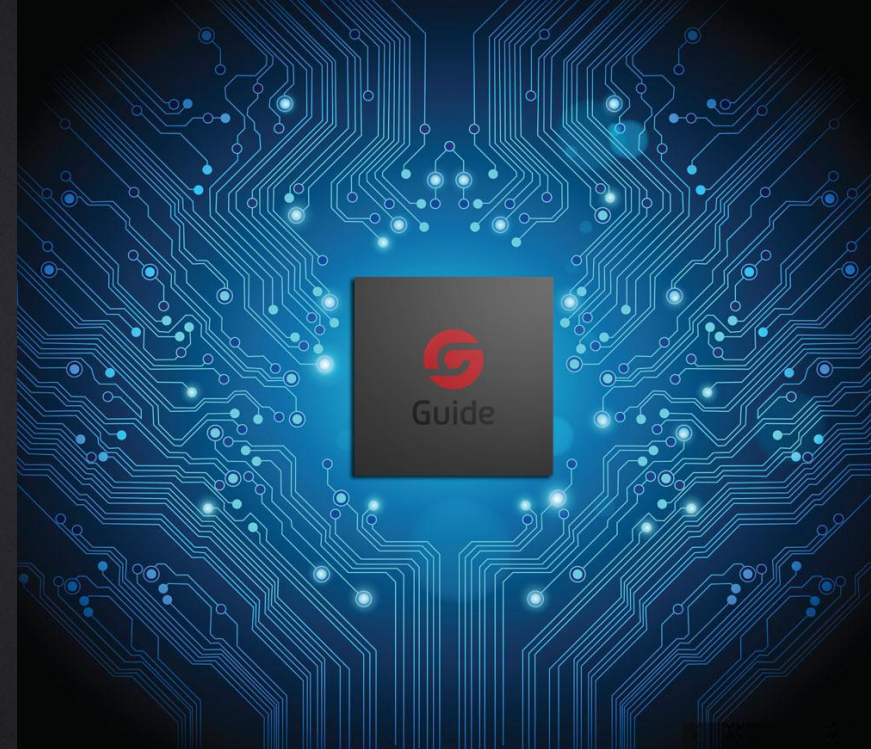
Guide DU Series is a high-performance Digital Day & Night Vision Rifle Scope designed for professional hunting. The high-sensitivity 1920x1080/4 μ m CMOS Sensor that offers outstanding image quality. The full-color HD 1920x1080 OLED display guarantees the smallest image detail with meticulous care to respect users' wishes. The advanced dual battery system provides up to 15 hours of non-stop use from day to night.



Highly Sensitive 1920x1080 Sensor



The DU50 uses a high quality 4 μm sensor with 1920x1080 pixel resolution that offers an exceptionally crisp image for image acquisition.



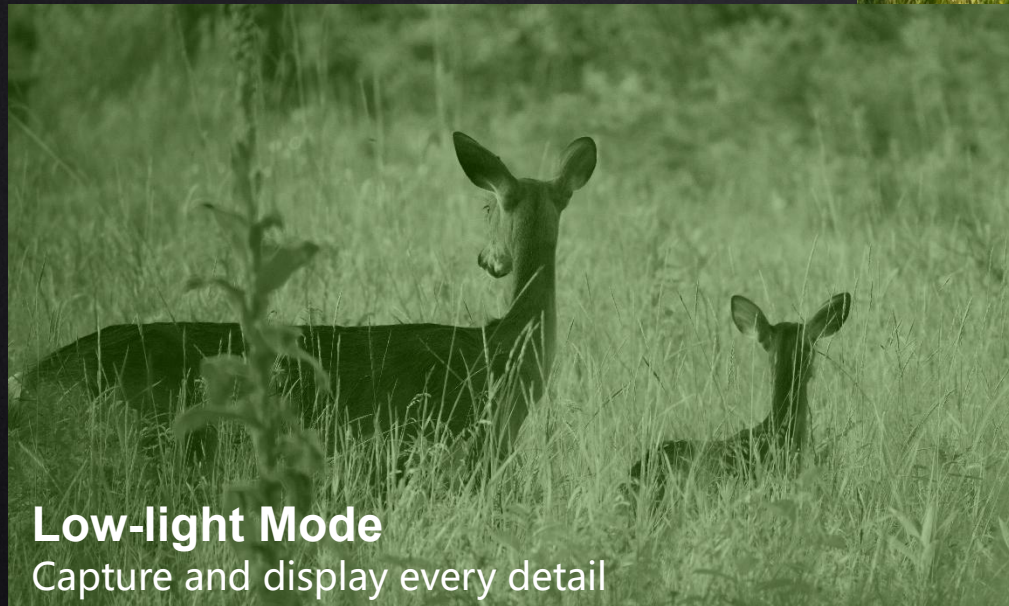
Full-Color HD OLED Display



The 0.35-inch HD OLED display delivers sharp, richly contrasted, vivid images that capture every moment in perfect detail.



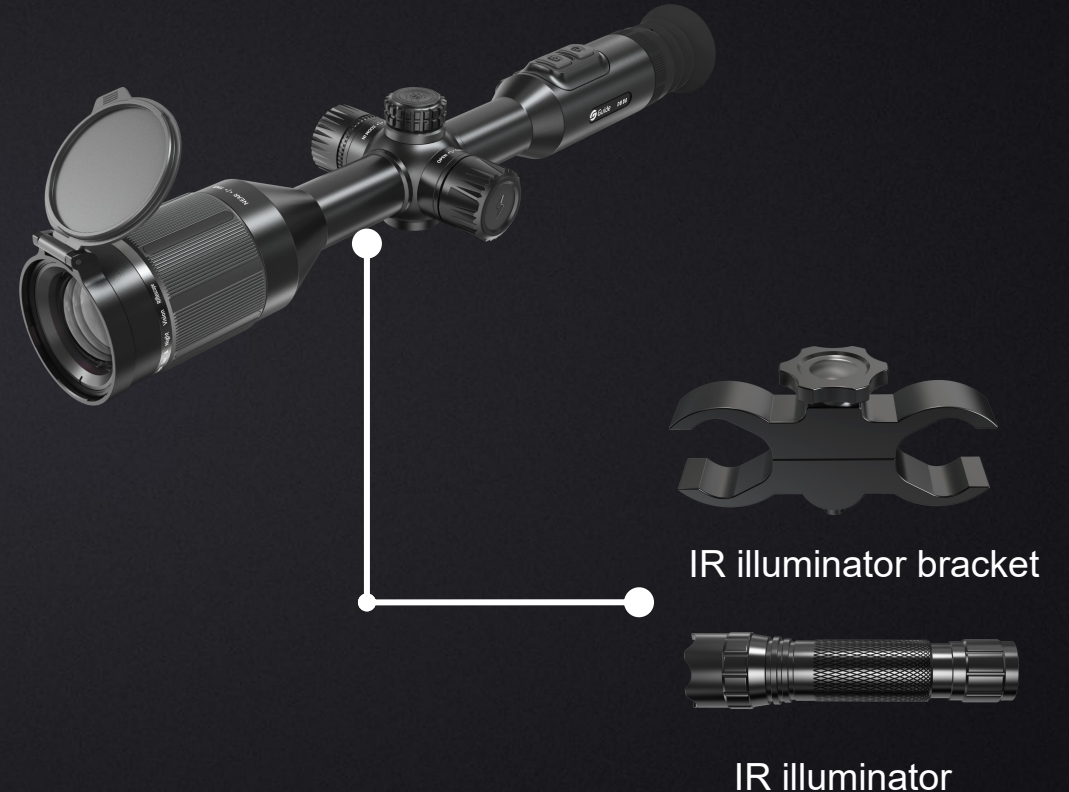
Three Viewing Modes



850nm IR Illuminator



Guide TU50 can be supported by an 850 nm IR illuminator to increase the brightness of distant objects to a level that meet the observation needs.



Mounting on standard 30 mm rings

Like a traditional day sight in a 30mm housing from the outside, the Guide DU50 can be mounted on other devices with flexibility.



Flexible magnification from 3.125x to 25x



The base magnification of Guide DU50 rifle scope increases eightfold – 3.125x to 25x. It makes the search more flexible and pinpoints the target more quickly while hunting.



600 m Night Viewing Range



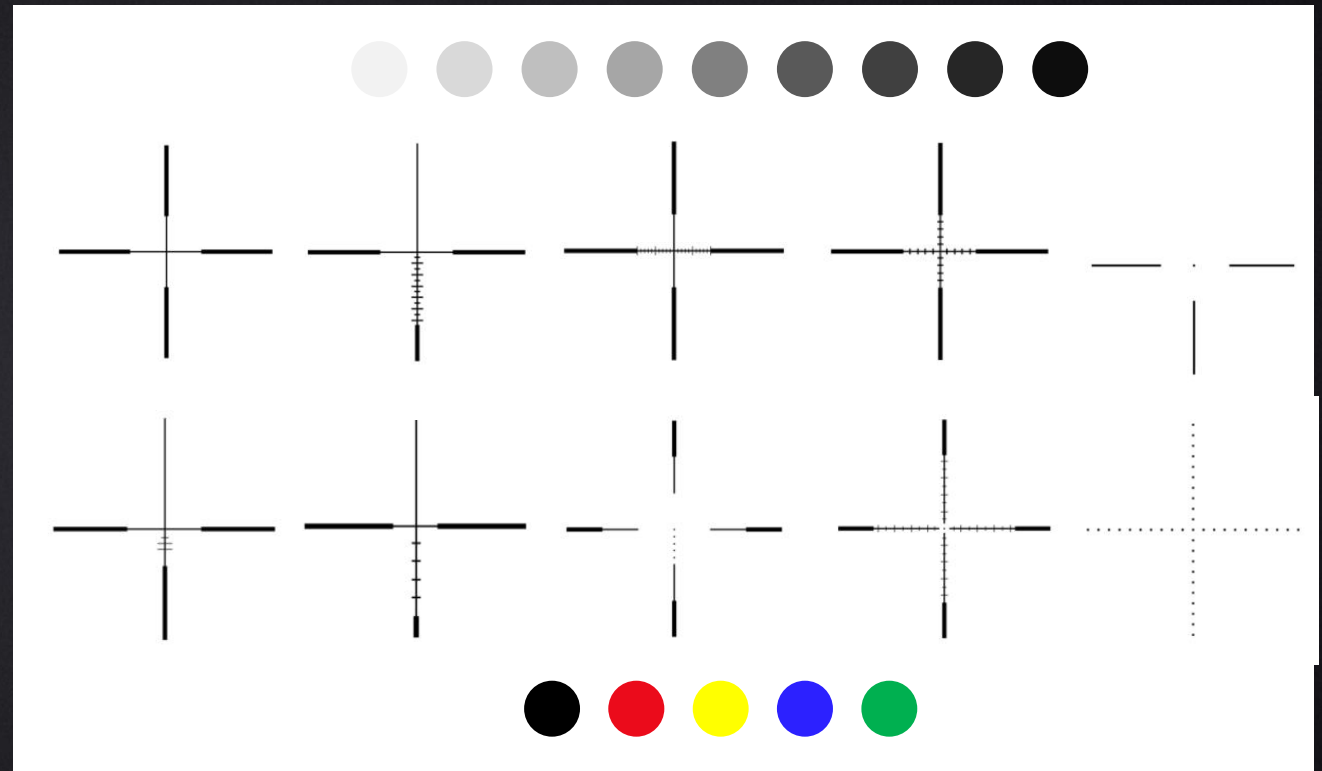
When paired with an invisible IR illuminator, the Guide DU50 enables itself to be a high-efficiency tool that detects targets like deer or wild boar from 600 meters.



10 Different Reticles



Guide DU50 offers 10 distinct reticles with 6 color schemes and 10 levels of brightness.



15 Hours Super Long Battery Life



Up to 15 hours of battery life are promised with a single charge, which is sufficient for the duration of intensive usage of the scope.



WiFi and APP Support



The built-in WiFi module connects the DU50 with an smartphone (Android or iOS) through the Target IR mobile application, which supports real-time image transmission to the smartphone and remote control.



TargetIR Available in your app store for Android and iOS

32 GB Storage for images and videos



The DU50 comes with larger storage capacities of 32GB for nearly 40,000 images and videos of several hours.

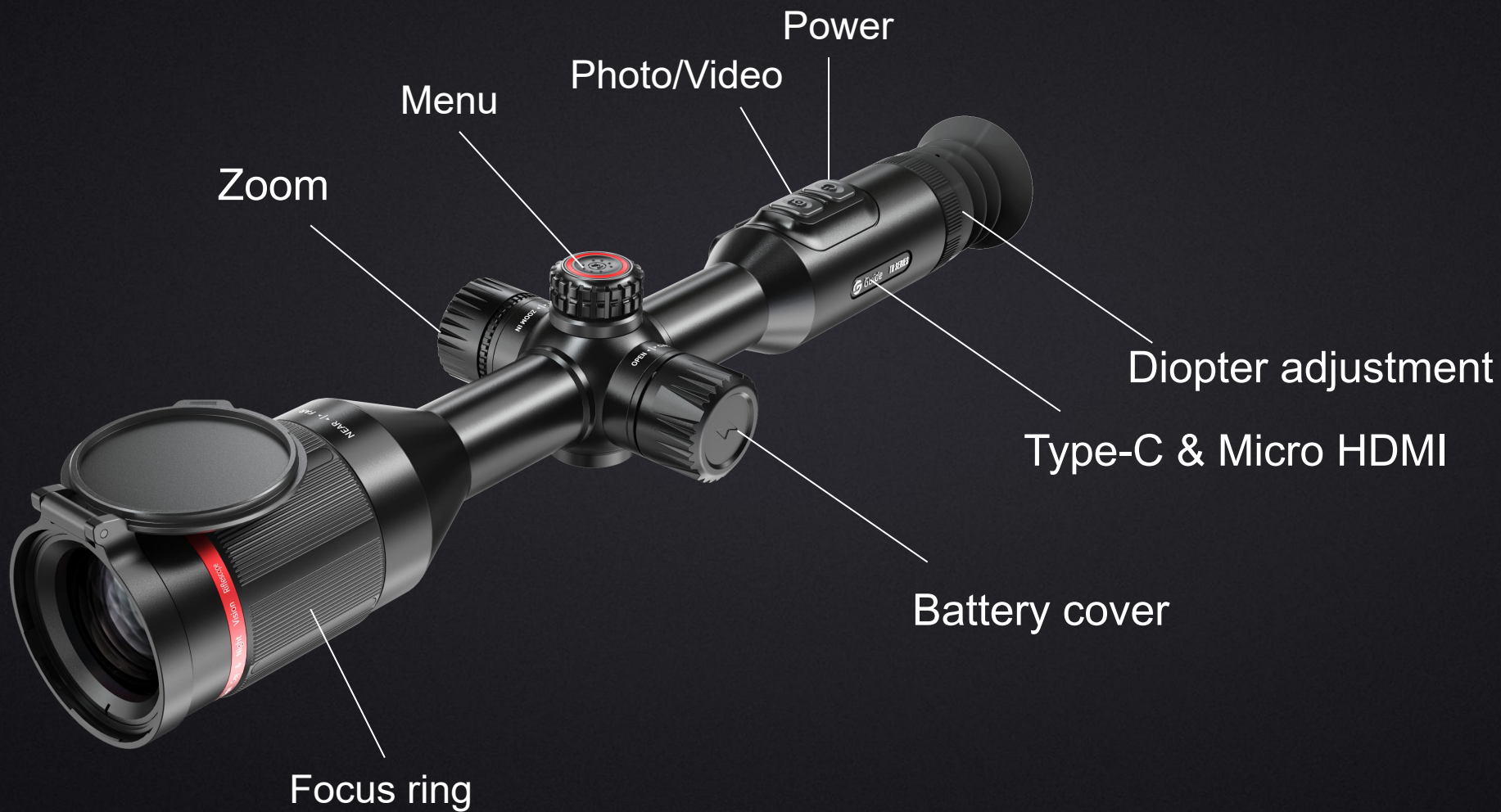


IP67 Protection Rating



With IP67 waterproof and dustproof rating, the Guide DU50 works in conditions of high humidity and heavy rain and protects from dust and impact.

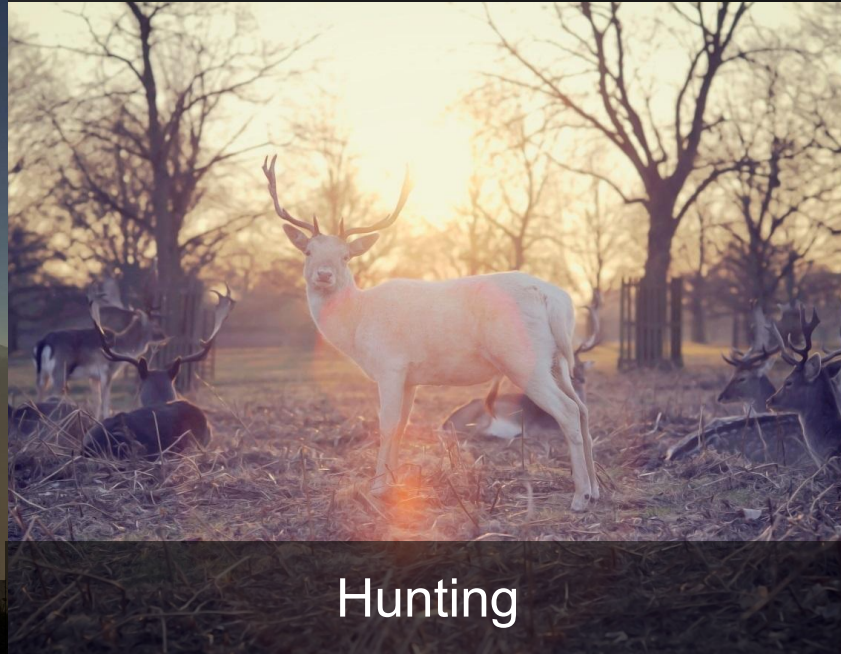




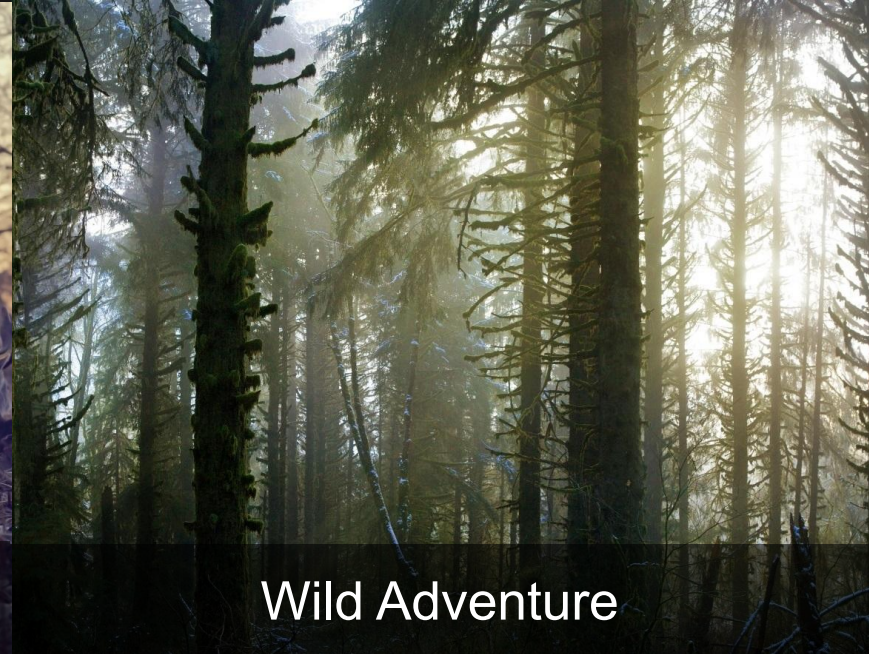
Product Application



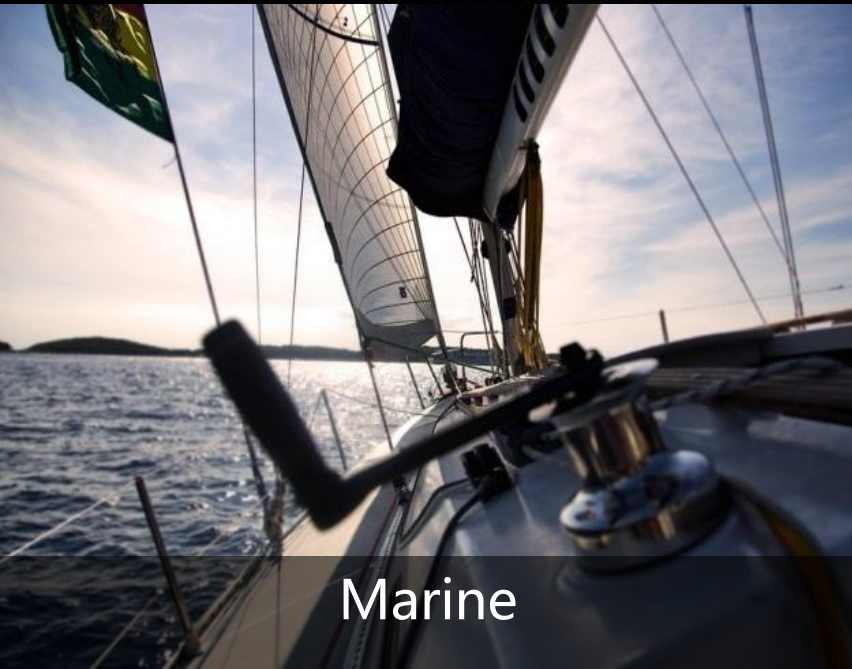
Outdoor



Hunting



Wild Adventure



Marine



Security




Law Enforcement

Thanks!

Guide Sensmart Tech Co., Ltd.

Loeffelholzstrasse 20, Haus 12 Eingang Nord, 90441 Nuremberg, Germany

T +49 911 2170 7934 E enquiry@guide-infrared.com

 [@GuideSensmart](#)

 [@GuideSensmart](#)

www.guideir.com

